

PRODUCT UPDATE

January 2019



The Automated Impella[®] Controller is now equipped with a protective cover.

What's New?

The Automated Impella Controller now has a cover that shields the electrical connection for the Impella[®] catheter when the controller is not in use.

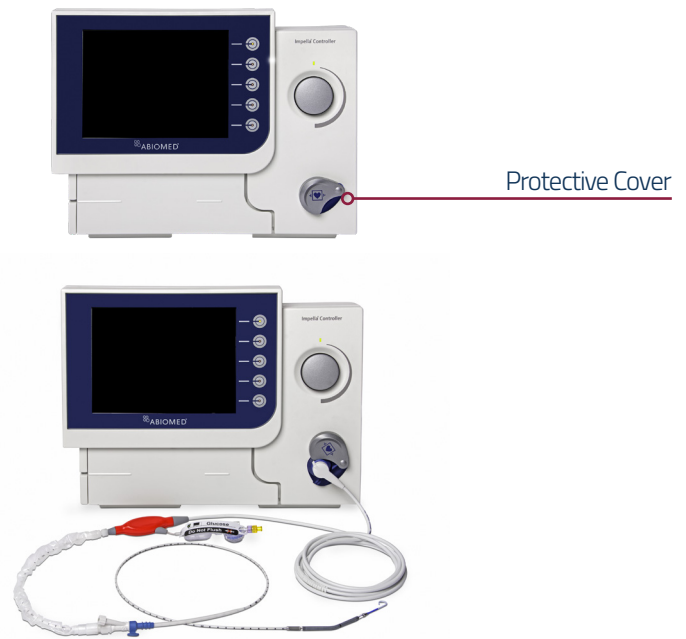
The Automated Impella Controller has been updated to Impella v7.3 software which provides text and visual prompts on use of the cover during case start.

Background

When the Automated Impella Controller is not in use, the cover shields the electrical socket from dust and contamination.

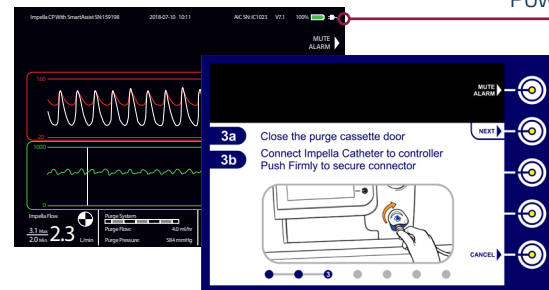
The cover rotates open allowing connection of the Impella Catheter to the Automated Impella Controller. After the Impella Catheter is removed, the cover will close automatically.

Impella v7.3 software is also included with this upgrade which provides visual prompts on how to use the cover during case start and a new location for the battery icon. There are no additional changes to the software.



Summary

The new protective cover, and supporting software, is intended to keep contamination out of the electrical socket enabling a consistent and reliable connection between the Impella Catheter and Automated Impella Controller.



**This bulletin is intended for dissemination of technical information only.*